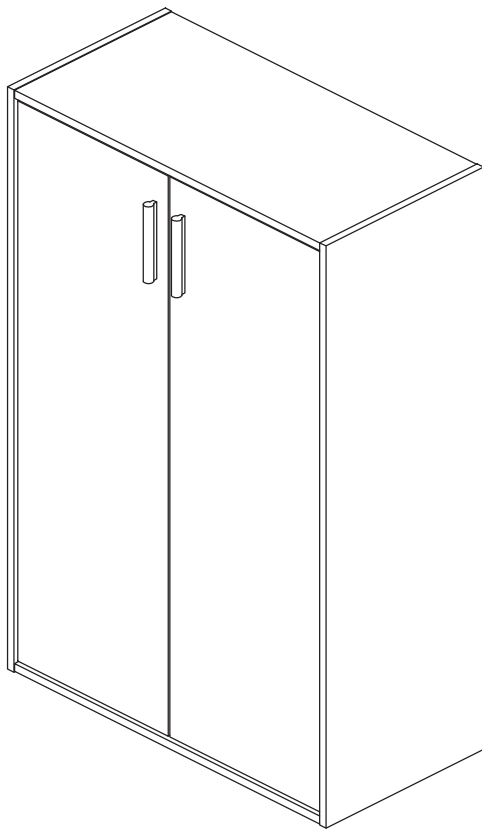


ASSEMBLY INSTRUCTIONS



TOOLS REQUIRED



Philips Screwdriver

(Not Included)



Power Tool

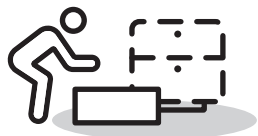
(Not Included)



**2 - People
Recommended**

BOOKCASE

PRE ASSEMBLY INTRODUCTION



Assemble near the area of the intended location.



Make sure you have enough space to move around.



Use cardboard or blankets to prevent scratches.



Ensure the furniture rests on a flat and level surface.

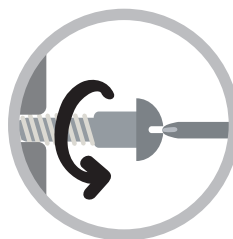
ASSEMBLY AND CARE ADVICE



FAILURE TO FOLLOW THE GUIDELINES BELOW MAY RESULT IN INJURY AND/OR PROPERTY DAMAGE.



Position each part correctly and insert screws or bolts into their respective holes.

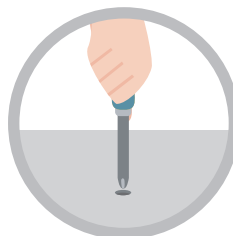


Turn clockwise to tighten and only tighten when step is completed or when instructed to do so.



Use the appropriate hand tools or power tools for assembly.

Select steps, such as tightening screws and/or bolts, may require hand tools to avoid causing damage during assembly.

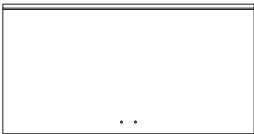


After two weeks, check and tighten any loose hardware and repeat again every six months thereafter.

ASSEMBLY INSTRUCTIONS

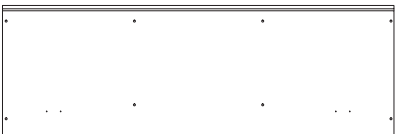
PARTS

A 2PCS



Top & Bottom Panels
(single-edged groove)

B 2PCS



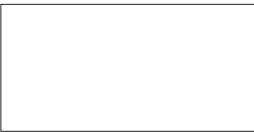
Side Panels

C 2PCS



Shelves
(bilateral grooves)

D 3PCS



Back Panels

E 1PC



Left-facing Door

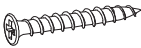
F 1PC



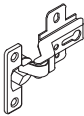
Right-facing Door

HARDWARE

1 16PCS



2 4PCS

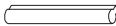


3 16PCS



Hinges & Matching Screws

4 2PCS

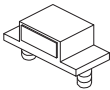


5 4PCS



Handles & Matching Screws

6 2PCS



7 20PCS

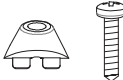


8 4PCS

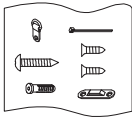


0.98"

9 8SETS



10 1SET



ASSEMBLY INSTRUCTIONS

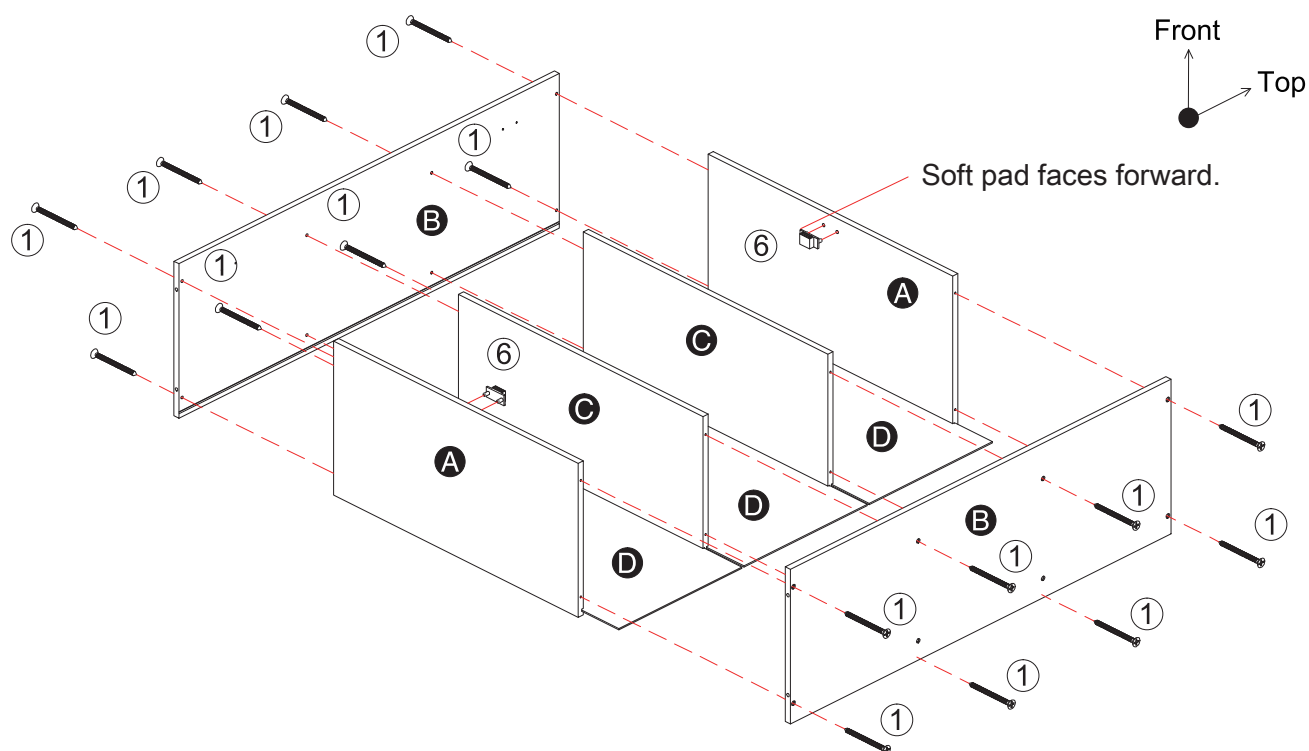
1

Align one Side Panel (#B) with Top Panels (#A) and secure with screws (#1).

Repeat with Shelf (#C) twice. Slide in Back Panel (#D).

Join remaining Side Panel (#B) and secure with screws (#1).

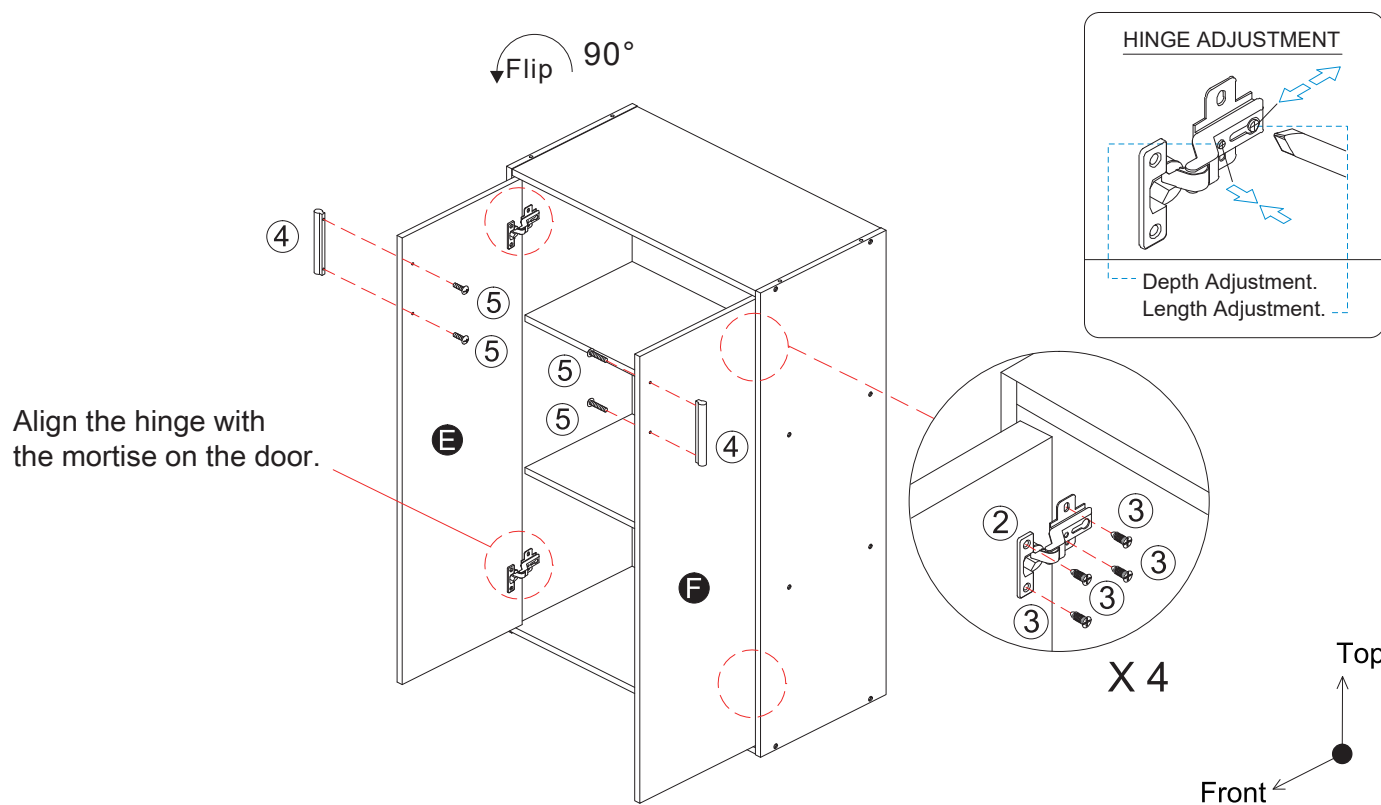
Install door stop (#6) on Top & Bottom Panels (#A).



Loosely attach hinges (#2) to Doors (#E, F) with screws (#3).

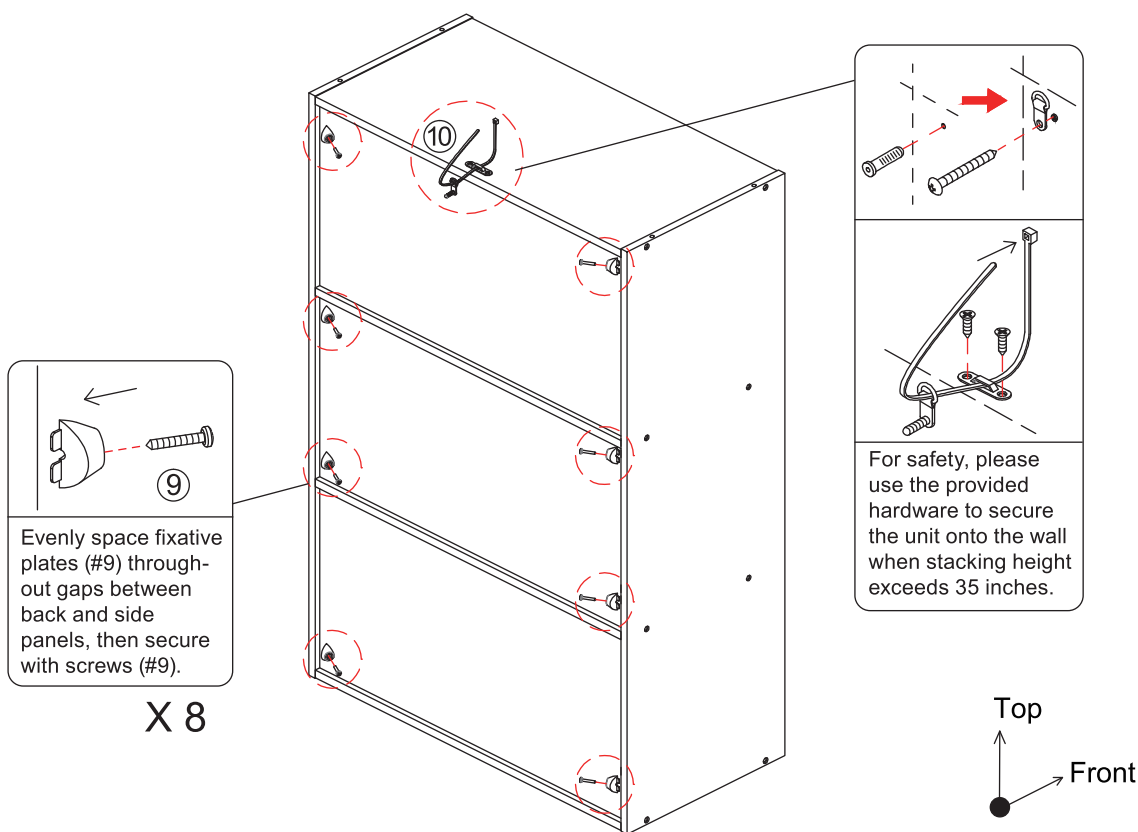
Align hinge with Side Panel (#B) and loosely secure with screws (#3).

Tighten and adjust as needed. Secure handles (#4) onto Doors (#E, F) using screws (#5).



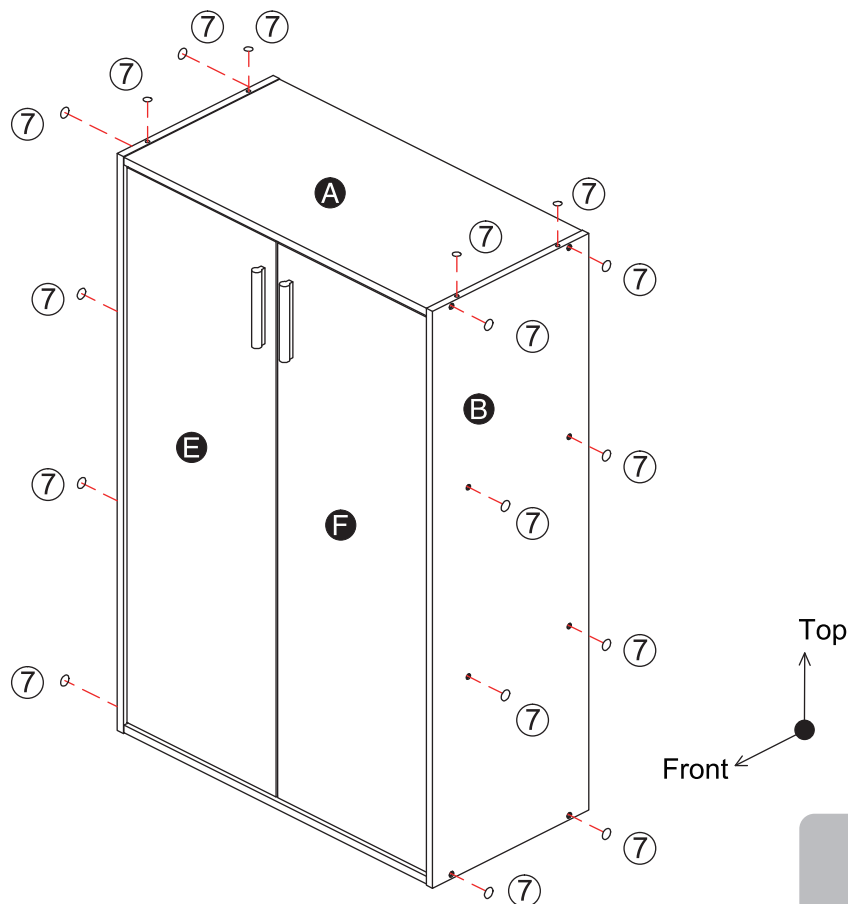
ASSEMBLY INSTRUCTIONS

2



3

Use provided stickers (#7) to cover any exposed holes.



ASSEMBLY
COMPLETED

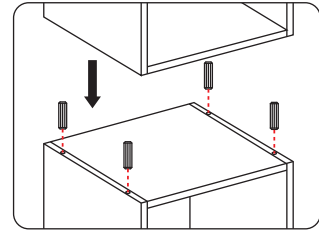


Safety Measures for Stacking

A maximum of **2** units
can be stacked.

The total stacked
height cannot exceed **70.6"**

The use of wooden dowels and anti-tip hardware is required when stacking height exceeds **35.0"**

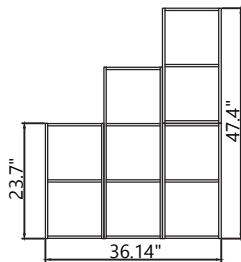


Refrain from drilling holes on your own.

Please make sure to use the pre-drilled holes and dowels (#8) for stacking.

Mix, Match & Stack

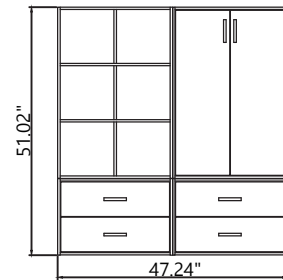
This item can be stacked with other compatible pieces in the collection. Configurations shown may include multiple units, which are sold separately unless otherwise stated.



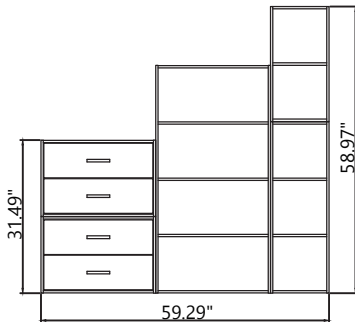
2S
2S · 3S · 2S



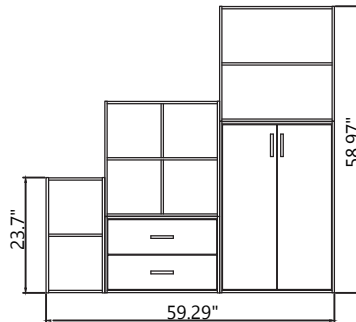
4S · 2L
2D · 2D



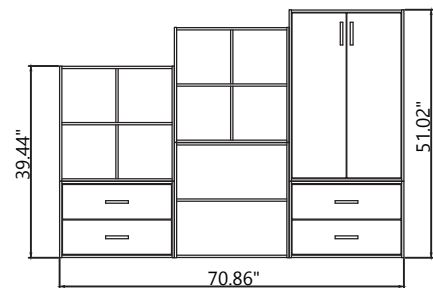
6S · DC
2D · 2D



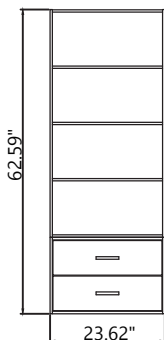
2D 2S
2D · 4L · 3S



4S · 2L
2S · 2D · DC



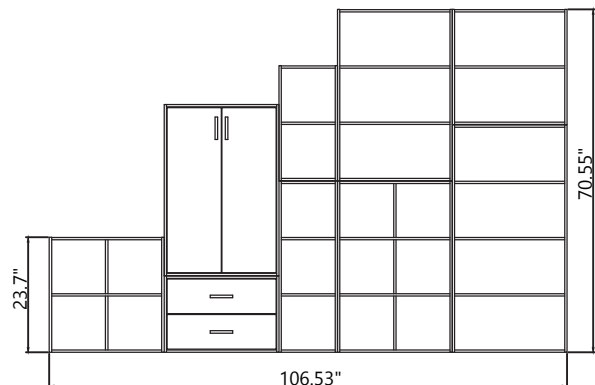
4S · 4S · DC
2D · 2L · 2D



4L
2D



2L · 3L · 4L
2D · 2D · 2D



DC · 2S · 3L · 2L
4S · 2D · 3S · 6S · 4L